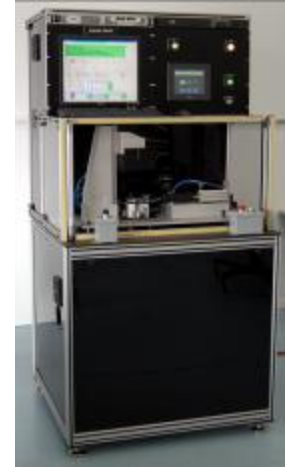


End-Of-Line (EOL) Testers



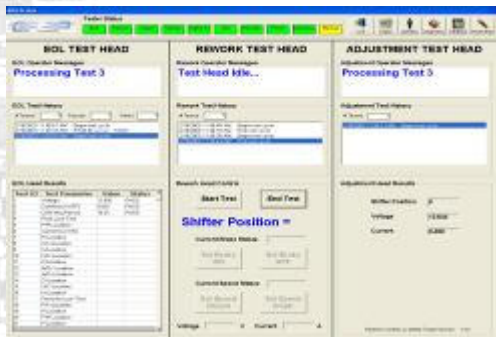
What is an End-Of-Line Tester?

- Used to test **functionality** of products at the end of the manufacturing process
- Ensures product **accuracy** by locating any defects that require repair prior to shipping to the end customer
- Built with the **reliability** of durable enclosures, hardware and connectors
- Employs the **consistency** of a simple test suite with little or no operator intervention

End-Of-Line Testers for many applications, including but not limited too:

<p>Electronic Modules (CAN, J1850, etc)</p> <ul style="list-style-type: none"> Suspension Air Bag HVAC Full Seat Functional test Gear shift drive-by-wire 	<p>Electro-Mechanical & Hydraulic Products</p> <ul style="list-style-type: none"> Transmission PWM, VFS Electronic Steering Hydraulic Steering systems Throttle Body 	<p>Full Subassembly</p> <ul style="list-style-type: none"> Drivers Climate Controlled and Memory Seat with Seat Pretensioner Door Testers Dual Sunroof
---	--	---

An Orion Test Systems Tester Includes:



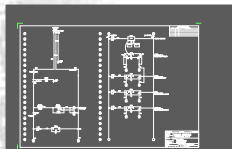
Simple operator Interface, usually triggered automatically by connecting a harness, the part or pallet entering the test fixture, or a barcode reader.



Robust cabinets or Extruded Aluminum



A comprehensive Diagnostics Screen for easy debug.



Complete Drawings, Source Code and repair manual



Robust Connectors



Industrial grade components, panel mounted and laid-out for easy debug and repair. Professional wired and fully tested.



The Orion Test Systems Advantage

From Conception to Completion, **Orion Test Systems & Engineering** provides the finest services in Design, Development, and Customer Satisfaction.

Orion Test Systems, 40 Engelwood Dr., Suite D, Lake Orion, MI. 48359, Phone: (248) 373-9097 Fax: (248) 373-9089